

LawnMaster®



21V LITHIUM **EDGER**

SAFETY AND OPERATING MANUAL

PLEASE READ THIS MANUAL CAREFULLY BEFORE OPERATING THE UNIT

LB21ED



A STEELFORT PRODUCT



PROUDLY
NZ OWNED



TABLE OF CONTENTS

OPERATOR SAFETY	3
FEATURES & TECHNICAL DATA	6
GETTING STARTED	7
OPERATION	7
Replacing the Blade	
MAINTENANCE	9
Cleaning the Edger	
STORAGE	10
WARRANTY	11

Thank you for purchasing our LawnMaster 21V Lithium Edger the information contained within this manual will help you to have many years of safe and trouble free use of this Lawnmaster product.

OPERATOR SAFETY

SAFETY RULES

This manual contains important safety information and instructions to operate the LawnMaster 21V Lithium Edger.

PLEASE READ THIS MANUAL CAREFULLY BEFORE USING THE UNIT.

Failure to adhere to the safety instructions could result in property damage and/or serious personal injury.

This manual should be considered a permanent part of the edger and should remain with the unit at all times. All information in this publication is based on the latest product information available at the time of printing.

Product Information and specifications can be altered and/or improved without notice. Content from this publication may not be reproduced without written consent.

DANGER

Indicates a hazardous situation which, if not strictly complied with, will result in substantial property damage and or serious injury.

WARNING

Indicates a hazardous situation which, if not strictly complied with, may result in property damage

CAUTION

Indicates a hazardous situation which, if not strictly complied with, could result in property damage or personal injury.

The warnings and precautions discussed in this manual does not cover all possible conditions and or scenarios that may occur.

It must be understood by the operator that common sense and caution must be taken into consideration when operating this product, as these are factors which cannot be built into this manual.

GENERAL PRODUCT SAFETY

WARNING: Read all safety warnings, instructions, illustrations and specifications provided with this battery powered edger. Save all warnings and instructions for future reference.

The term Battery Powered Lawn Edger refers to battery operated (cordless) product.

WORK AREA SAFETY

- Keep work area clean and well lit. Cluttered or dark areas invite accidents.
- Do not operate the edger in explosive atmospheres, such as in the presence of flammable liquids, gases or dust. The edger can create sparks which may ignite the dust or fumes.
- Keep children and bystanders away while operating the edger. Distractions can cause you to lose control.

ELECTRICAL SAFETY

- The edger comes with a battery charger. Please ensure you use only the supplied charger to charge the battery in your edger.
- Avoid body contact with earthed or grounded surfaces, such as pipes, radiators, ranges and refrigerators. There is an increased risk of electric shock if your body is earthed or grounded.
- Do not expose the edger to rain or wet conditions. Water entering the edger will increase the risk of electric shock.
- Never carry the charger by the cord, and never unplug the power cord by pulling on it. Keep the cord away from heat, oil, sharp edges, and moving parts. Damaged or tangled cords increase the risk of electric shock.
- Always ensure the power supply to the battery charger is turned off before plugging the charger in or out of the mains power supply.

PERSONAL SAFETY

- Stay alert, pay attention to what you're doing, and use common sense when operating the edger. Never use the edger if you're tired or under the influence of drugs, alcohol, or medication. A moment of inattention can lead to serious personal injury.

- Always use personal protective equipment. Wear eye protection at all times. Depending on the conditions, use additional protective gear such as a dust mask, non-slip safety shoes, a hard hat, or hearing protection to reduce the risk of personal injury.
- To prevent unintentional starting, ensure that your hand is not near the on/off trigger before connecting the battery pack to the edger.
- Ensure that all tools required to attach or remove the blade from the edger are removed before starting the machine. Leaving tools on or around the edger after loosening or tightening the blade could result in personal injury.
- Do not overreach. Always maintain proper footing and balance to ensure better control of the edger, especially in unexpected situations.
- Do not wear loose clothing or jewellery. Keep your hair and clothing away from moving parts. Loose clothes, jewellery or long hair can be caught in moving parts.
- Make sure all safety guards, handles and on/off triggers are working correctly on the edger, if any safety component has failed please stop using and take it to your local LawnMaster dealer for repair.
- Do not let familiarity with edgers lead to complacency. Always follow safety principles, as a careless action can result in severe injury in just a fraction of a second.

LAWN EDGER USE AND CARE

- Recharge only with the charger specified by the manufacturer. A charger that is suitable for one type of battery pack may create a risk of fire when used with another battery pack.
- Use the edger only with the battery that was supplied with the edger.
- When the battery pack is not in use, keep it away from metal objects such as paper clips, coins, keys, nails, screws, or any small metal items that could connect the terminals. Shorting the battery terminals together may cause burns or a fire.
- Under abusive conditions, liquid may be ejected from the battery; avoid contact. If contact occurs, rinse with water immediately. If the liquid comes into contact with your eyes, seek medical attention. The liquid ejected from the battery may cause irritation or burns.
- Do not use a battery pack or battery charger that is damaged or modified. Damaged or modified batteries may exhibit unpredictable

behaviour resulting in fire, explosion or risk of injury.

- Do not expose a battery pack or battery charger to fire or excessive temperature. Exposure to fire or temperature above 130 °C may cause explosion.
- Follow all charging instructions and do not charge the battery pack outside the temperature range specified in the instructions. Charging improperly or at temperatures outside the specified range may damage the battery and increase the risk of fire.

SERVICE

- Have your LawnMaster 21V Edger serviced by a LawnMaster service dealer, using only genuine replacement parts. This will ensure that the safety of the edger is maintained.

SAFETY WARNINGS

- Always follow safety rules. Read instructions carefully before use and keep them for future reference. Familiarise yourself with the controls and proper use.
- Not for use by children or those with reduced physical, mental, or sensory abilities. Children must be supervised to prevent play with the product.
- Never use the product near people, children, or pets. Keep a 15m distance and turn off if anyone enters the area.
- The operator is responsible for accidents or hazards to others or property.
- Wear long trousers, boots, gloves, and protective eyewear and ear protection. Avoid loose clothing, short trousers, or jewellery. Never use with bare feet.
- Keep the work area clear of wires, sticks, stones, and debris to avoid thrown objects.
- Always inspect the product before use to ensure blades, bolts, and the cutter assembly are not damaged. Replace worn parts in sets to maintain balance.
- Use only manufacturer-recommended replacement parts and accessories.
- Operate in daylight or with good artificial light.
- Maintain firm footing and balance, especially on slopes. Walk, don't run.
- Use caution when reversing or pulling the edger.
- Ensure the blade stops before crossing non-grassy surfaces or transporting the product.

- Never operate with defective or missing guards.
- Turn on the product carefully, keeping feet away from the blades, and never stand in line with the blade path.
- Do not start the product if a bystander is in front of the blades.
- Keep hands and feet away from rotating parts.
- To reduce injury risk, turn off the product, remove the battery, and allow it to cool down. Ensure all moving parts have stopped before servicing, clearing blockages, cleaning, changing accessories, inspecting for damage, or performing maintenance.
- Take regular breaks to avoid injury from prolonged use.
- Operate the product only between 0°C and 40°C.
- Store the product in a location where the temperature is between 0°C and 40°C.

ADDITIONAL SAFETY WARNINGS

- Some regions may have restrictions on using this product. Check with your local authorities for guidance.
- Do not use the product in bad weather, especially if there's a risk of lightning.
- Avoid operating the product on wet grass to ensure safety and optimal performance.
- Wearing hearing protection may limit your ability to hear warning sounds. Stay alert to potential hazards within and around the work area.

ADDITIONAL BATTERY SAFETY WARNINGS

- To prevent fire, injury, or damage, never immerse the product, battery pack, or charger in fluid, and keep fluids, especially corrosive or conductive ones, away from them.
- Charge the battery pack in temperatures between 10°C and 38°C.
- Store and use the battery pack in temperatures between 0°C and 40°C.

OVERLOAD PROTECTION

LawnMaster 21V Lithium-ion batteries are designed with features that protect the lithium-ion cells and maximise battery life. If the product stops during use, the following may be the causes:

- The maximum current draw of the battery pack has been exceeded, causing it to automatically

stop powering the product. Release the trigger to reset the product, and pull the trigger to resume operation.

- Excessive temperatures cause the battery pack to stop powering the product. If the battery pack is too warm, allow it to cool down.

SYMBOLS ON THE PRODUCT



Safety Alert



Read and understand all instructions before operating the product. Follow all warnings and safety instructions.



Wear eye, ear, and head protection.



Wear non-slip safety footwear when using the product.



Wear non-slip, heavy-duty gloves.



Beware of thrown or flying objects/ Keep all bystanders, especially children and pets, at least 15 m away from the operating area.



Keep hands and feet away from the blade and cutting area.



Direction of blade rotation



Do not expose the product to rain or damp conditions.



Remove the battery pack before starting any work on the product.



Regulatory Compliance Mark (RCM). The product meets applicable regulatory requirements.

FEATURES & TECHNICAL DATA

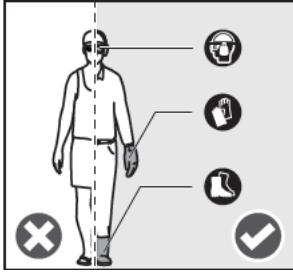


- | | | |
|----------------|-------------------|--------------------------|
| 1. Blade | 4. Upper Shaft | 7. Front Handle |
| 2. Guide Wheel | 5. Rear Handle | 8. Telescopic Shaft Lock |
| 3. Lower Shaft | 6. On/Off Trigger | 9. Blade Safety Guard |

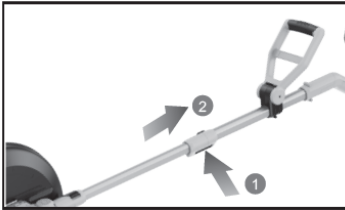
MODEL	LM21ED
Battery	21V 2Ah Lithium
Run Time (with blade)	15-25 Minutes
Charge Time	2.5 Hours
Telescopic Shaft Length	1100-1500mm
Blade Length	250mm
No-Load Speed	7000 min
Cutting Depth	37-52mm
Weight (without battery)	4.2kg

GETTING STARTED

1. Always wear safety goggles or safety glasses with side shields while operating the product. Use non-slip, heavy-duty protective gloves and non-skid, protective footwear to safeguard your feet and maintain stability on slippery surfaces.



2. The edger features a telescopic shaft for easy adjustment. To adjust the shaft, open the locking lever (point 1) and slide the lower shaft (point 2) in or out to your desired length. Once adjusted, close the locking lever (point 1) to secure the position.

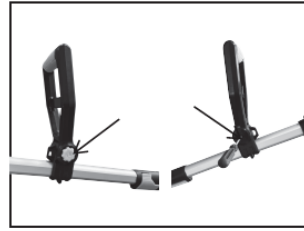


Point 1 - Open

Point 1 - Closed



3. As shown in the picture below, press the gear button and screwdriver inward at the same time to remove the auxiliary handle. The front handle Angle is adjustable. When adjusting the front handle Angle, press the adjusting button at the lower side of the handle first and set the front handle at the appropriate Angle for your job.

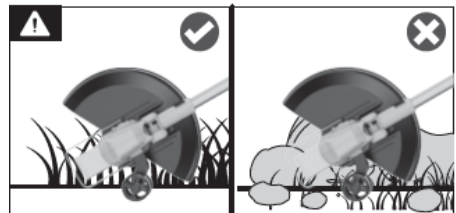
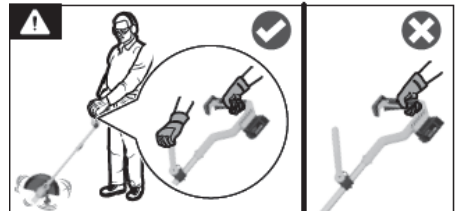


Adjusting Button

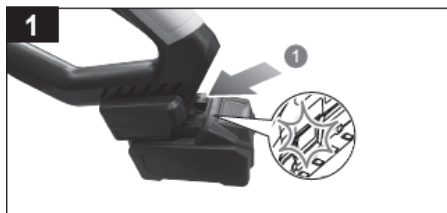
OPERATION

WARNING: Always use two hands to operate the product. Hold the rear handle with the right hand and the front handle with the left hand.

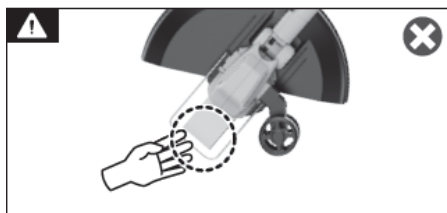
Beware of objects thrown by the cutting means. Remove debris like small stones, gravel, and other foreign objects from the work area before starting operation. Wires or string may become entangled with the cutting means.



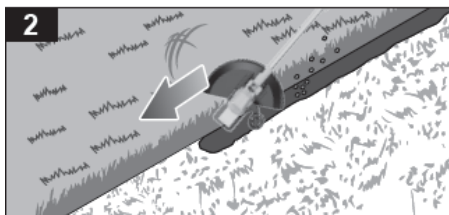
1. Insert the battery pack until the latches click into place. Hold the lock-out trigger and squeeze the on/off trigger to turn on the product.



WARNING: Keep hands and feet away from the blade at all times and especially when turning on the motor.



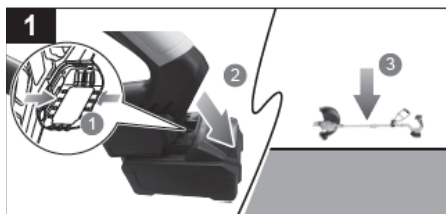
2. Use the edger along sidewalks, driveways, flower beds, curbs, and similar areas.



NOTE: Cut at a steady pace. If the blade begins to bog down, you are edging too fast; slow your pace. Do not force the blade into the ground.

REPLACING THE BLADE

1. Remove the battery pack from the edger (Push the button down at the back of the battery pack and slide the battery out from the edger).



2. Rotate the inner flange until the locking hole is clear, place an allen key or screwdriver into the open locking hole to lock the blade shaft and stop the blade from rotating, loosen and remove the flange nut using the combination spanner.

NOTE: That the flange nut is a left hand threaded nut.



Locking Hole



3. Remove the outer flange, flange nut, and blade from the motor shaft.



4. Align and install the new blade on the inner flange, making sure that the blade sits flat. Install the outer flange and flange nut.

NOTE: Install the outer flange properly. Only the outer ring of the outer flange, not the inner ring with the hole, must touch the blade.



- Rotate the inner flange until the locking hole is clear, place a allen key or screwdriver into the open locking hole to lock the blade shaft and stop the blade from rotating, tighten the flange nut using the combination spanner.

NOTE: That the flange nut is a left hand threaded nut.



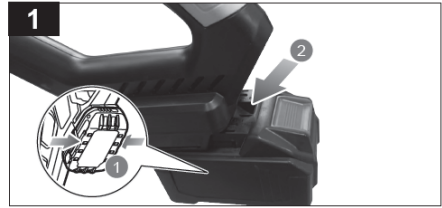
Locking Hole



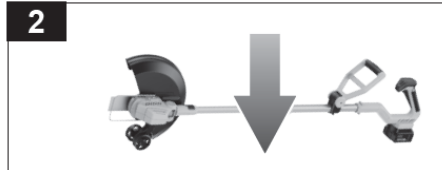
- damaged parts through a local LawnMaster service dealer.
- If labels become damaged or unreadable, have them replaced at a local LawnMaster service dealer.

CLEANING THE EDGER

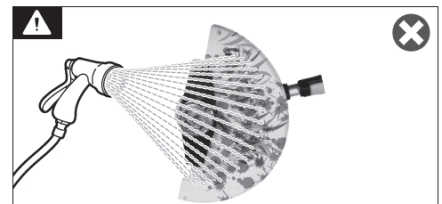
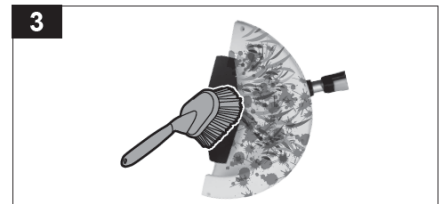
- Remove the battery pack form the edger (Push the button down at the back of the battery pack and slide the battery out from the edger).



- Place the product on a level surface. Position the product with the motor side down and the blade guard side up.



- Remove all foreign materials from the product with a soft, dry brush.



WARNING

Avoid using solvents when cleaning plastic parts. Most plastics are susceptible to damage from various types of commercial solvents and may be damaged by their use.

MAINTENANCE

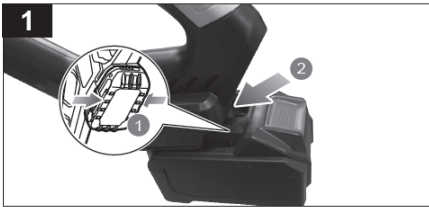
- Always use original manufacturer's replacement parts, accessories, and attachments. Using non-genuine parts can lead to poor performance, possible injury, and may void your warranty. Servicing should only be conducted by qualified technicians at a local LawnMaster service dealer. Ensure only original replacement parts are used during repairs.
- Turn off the product and remove the battery pack before performing maintenance or cleaning.
- You may perform adjustments and repairs as described in the manual. For anything beyond these, consult a local LawnMaster service dealer.
- Clean the product after each use with a soft, dry cloth. Inspect for damage, and have any damaged components repaired or replaced at a local LawnMaster service dealer.
- Before each use and periodically, inspect all nuts, bolts, and screws for proper tightness to maintain safe operation. Repair or replace any

STORAGE

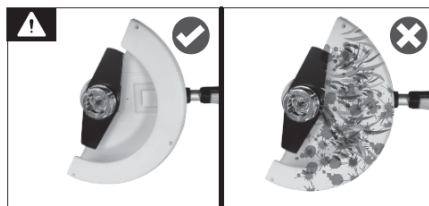
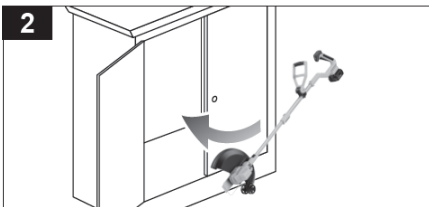
STORING THE EDGER



1. Remove the battery pack from the edger (Push the button down at the back of the battery pack and slide the battery out from the edger).



2. Store the product in a cool, dry, and well-ventilated place that is inaccessible to children and away from sources of ignition.



WARRANTY

Subject to the following conditions, this unit is covered by a comprehensive two-year warranty.

The unit is designed for domestic purposes only, issues and faults due to commercial use may not be covered by warranty. The warranty covers all manufacturing faults but excludes normal wear and tear, misuse, neglect, accidental damage or defects arising from failure to comply with instructions as outlined in this owners manual. Only genuine spare parts can be used for repairs and this must be carried out by an authorised LawnMaster Services Dealer to maintain warranty.

Warranty does not cover the cost of transportation of any part(s) but does cover the labour/parts cost incurred in repairing or replacing any defective part(s) consequential or special damages and / or expenses resulting from any defect.

If the unit requires further repairs or services please visit www.lawnmaster.co.nz to find your local LawnMaster Service Dealer.

For all other enquiries contact **Steeffort Customer Services +64 6 350 1350**

LawnMaster®

FIND US



www.lawnmaster.co.nz



lawnmasternz

Steelfort

500 Rangitikei Street, Private Bag 11045
Palmerston North, 4412, New Zealand
06 350 1350

Steelfort Auckland

880 Great South Road, Penrose
Auckland, 1061, New Zealand
09 573 1324

Steelfort Christchurch

21 William Lewis Drive, Sockburn
Christchurch, 8042, New Zealand
03 324 2480